



Total Solution Provider in Saw Device

SA63BD

63.0MHz IF SAW Filter

0.4 MHz Bandwidth

Revision 1: 29. Oct. 2007



- Electrical Characteristics
 - Package Dimensions
 - Testing Environment
 - Frequency Characteristics
-

SAWNICS Inc.

460 Cheonheung-ri, Seonggeo-eup, Cheonan-si, Chungcheongnam-do, 330-836 / Korea.
Tel: +82 41 550 9372 / Fax: +82 41 550 9399 / www.sawnics.com

□ Electrical Characteristics

Maximum Ratings

Parameters Description	Unit	Minimum	Typical	Maximum
Operating Temperature Range	°C	-55	-	85
Storage Temperature Range	°C	-55	-	85
Maximum DC Voltage	V	-	-	10
Maximum Input Power	dBm	-	-	10
Source Impedance (single ended) ⁽¹⁾	Ω	-	50	-
Load Impedance (single ended) ⁽¹⁾	Ω	-	50	-
Package type & size	D			
Length x Width	mm ²	-	20.0x12.6	-
Height	mm	-	-	5.05

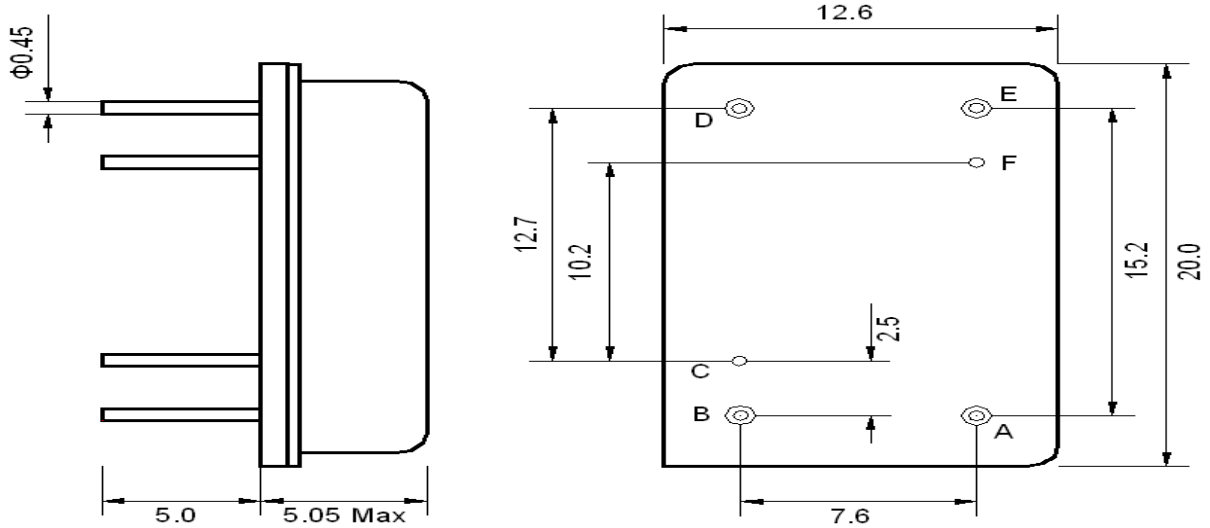
Electrical Specification

Parameters Description	Unit	Minimum	Typical	Maximum
Center Frequency (Fo)	MHz	-	63.0	-
Insertion Loss at Fo	dB	-	14.2	15.0
Amplitude Ripple Variation at Fo±100KHz	dB _{p-p}	-	1.0	2.0
Temperature Coefficient	ppm/°C	-	-0.03	-
Bandwidth at -3.0 dB	KHz	Fo±200	Fo±225	-
Bandwidth at -55.0 dB	KHz	-	Fo±750	Fo±800
Ultimate Attenuation	dB	60	65	-
Spurious Attenuation	dB	55	57	-

Notes : (1) With Matching Network (Ref. Testing Environment Circuit as shown below).

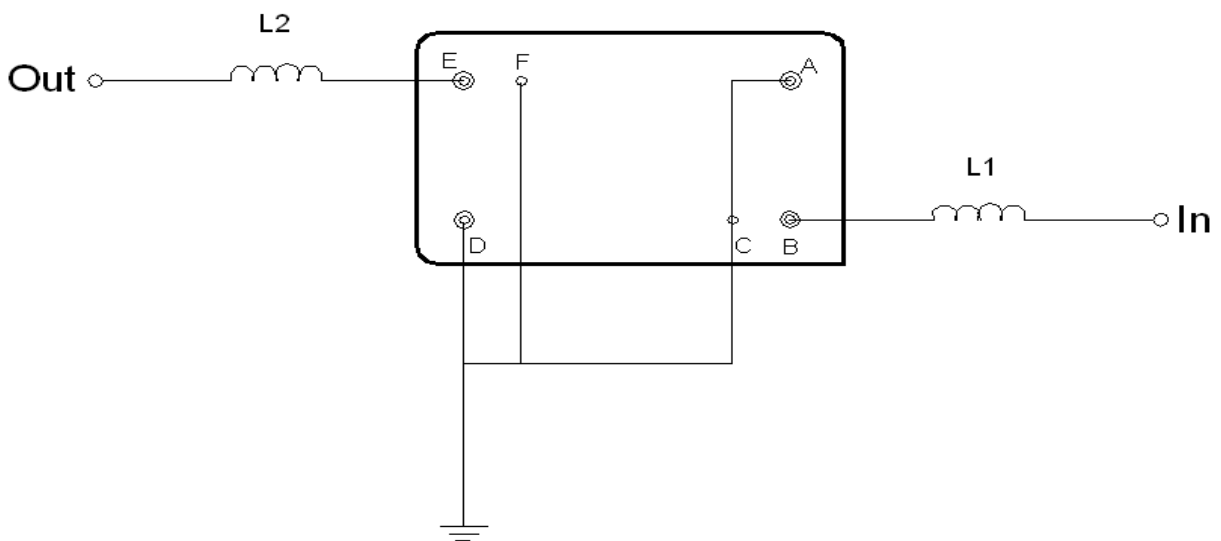
Those impedances could be modified with different impedance values and/or structures, if necessary.

Package Dimensions



Pin Description	
A, C, D, E, F	Ground
B	Input
E	Output

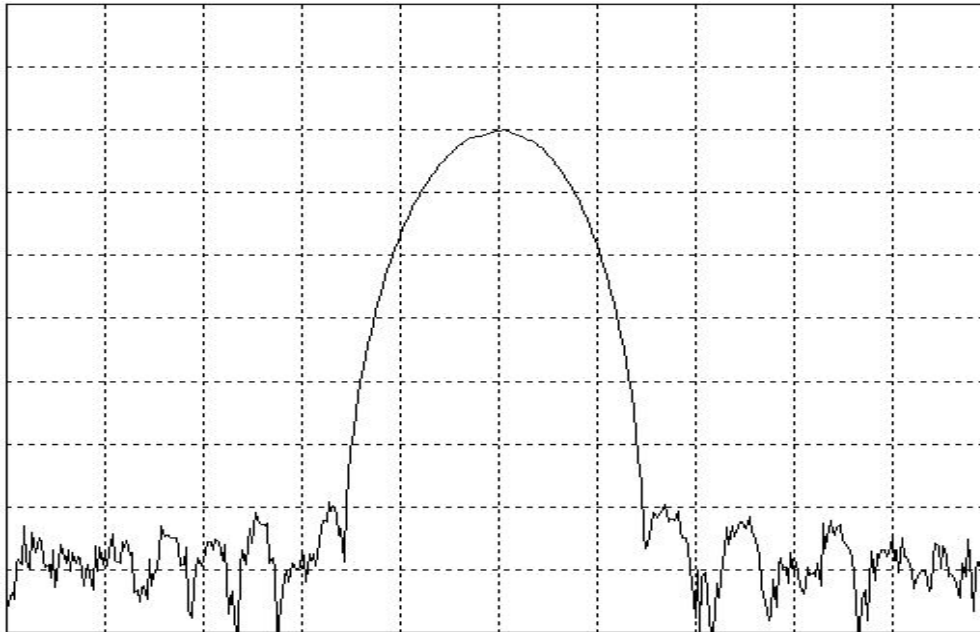
Testing Environment



Test Fixture & Values	
Input	L1 = 270 nH
Output	L2 = 270 nH
Source/Load Impedance	50 Ω

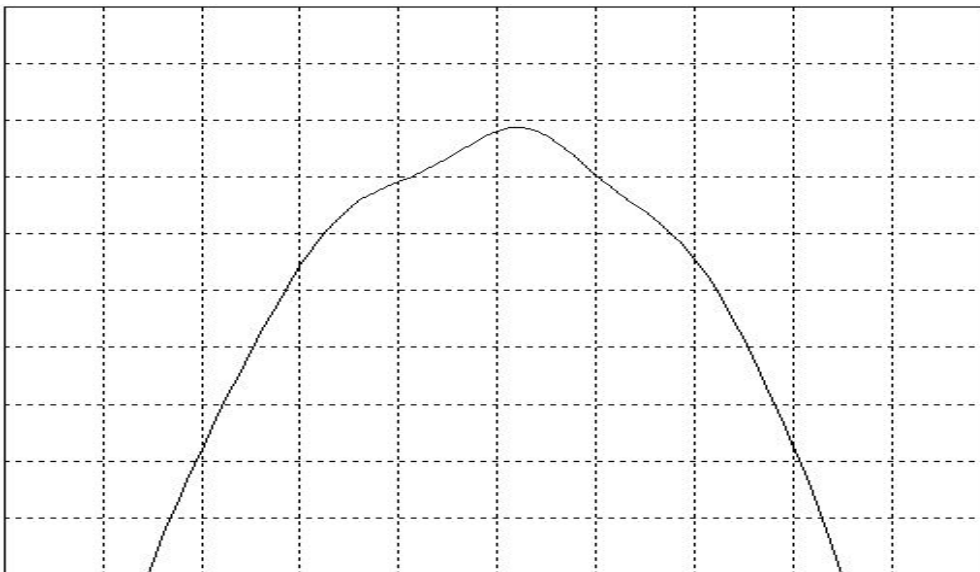
□ Frequency Characteristics

Frequency Response



Horizontal : 500 KHz/Div

Vertical : 10 dB/Div



Horizontal : 100 KHz/Div

Vertical : 1 dB/Div



SAWNICS

Data Sheet(Rev 1)

SA63BD

63.0MHz IF SAW Filter